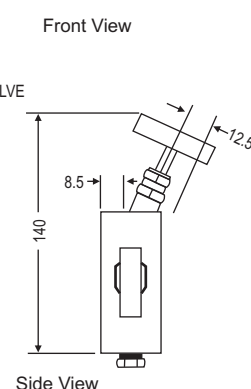
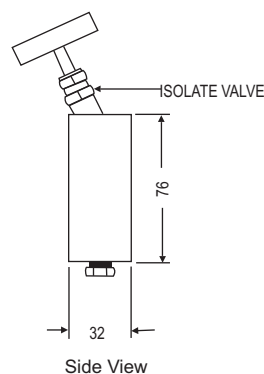
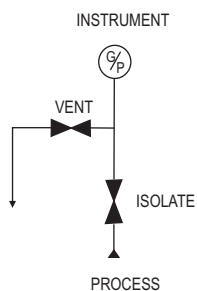
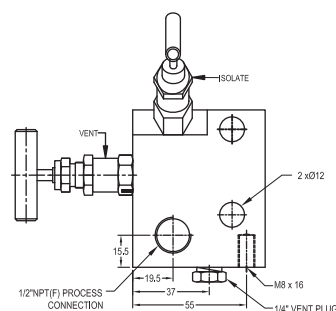
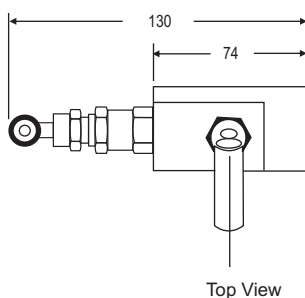


DIRECT MOUNT (PIPE TO FLANGE)

CE2VR1

With threaded horizontal port inlet with a Flange outlet instrument connection. A vent/test port on base. The venting bonnet is positioned on the left hand side and the isolating bonnet angular on the top.



Standard connection

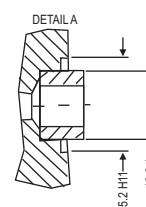
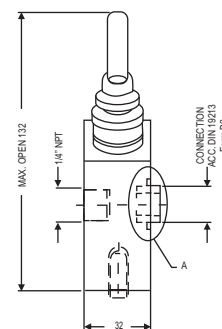
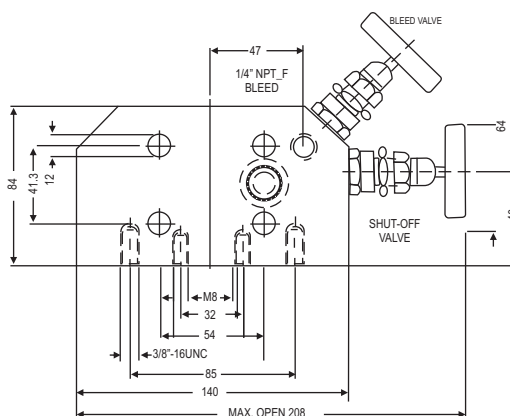
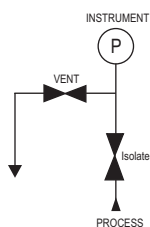
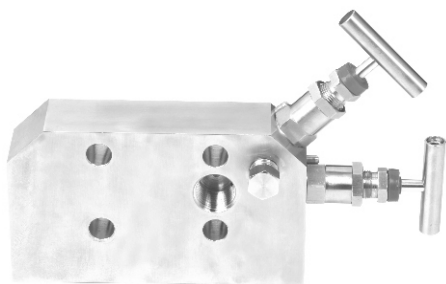
Product	Process Side	Instrument Side	Vent/Test
2VF	1/2" NPT female	Flanged	1/4" NPT female

VM - 2VF - 01 - 2009 / 10

DIRECT MOUNT (PIPE TO FLANGE)

2V42

With threaded vertical port inlet and female outlet. The vent/test connection is positioned on the front side. The venting bonnet is positioned on the right hand side and the isolating bonnet on left hand side.



Standard connection

Product	Process side	Instrument side	Vent/Test
2V42	1/2" NPT female	Coplanar (DIN 19213 Form B2)	1/4" NPT female

VM - 2V42 - 01 - 2009 / 10

For Further details please contact factory.

Specifications - Standard version 2VF, 2V42

Body	: SS 316
Stem	: SS 316
Valve assembly	: SS 316
'T' bar handle	: SS 304
Maximum working pressure	: 6000 PSI
Maximum working temperature	: 240°C
Packing	: PTFE
Type of stem	: Type CT; Stem with conical metal tip
Drain port	: 1/4" NPT [F]; provided with SS 316 plug

How to order : 2VF, 2V42

Body Material	Stem Type	Stem Packing	Size = Inlet x Outlet	Connections	Threads
C = Carbon Steel	CT	P = PTFE	2F = 1/4" x Flange	MF = Male x Female	N = NPT (ANSI B 1.20.1)
S = SS 316	DS	G = Grafoil	3F = 3/8" x Flange	FF = Female x Female	P = BSPP (BS 2779, ISO 228/1)
S4 = SS 304			4F = 1/2" x Flange	SW = Socket weld	B = BSPT (BS 21, ISO 7/1)
SL = SS 316L			4C = 1/2" x Coplanar	FM = Female x Male	
M4 = Monel 400				FC = Female x Coplanar	
M5 = Monel 500					
H = Hastelloy C					

Options -

- IE : Handle circular.
- TF : Compliance to NACE standard MR-0175.
- SG : For Oxygen service, valves are supplied cleaned, degreased and suitably packed.
- GH : Material test certificate
- GO : Hydro test certificate
- MB : Mounting Bracket
- MBC : Mounting bolts (7/16" UNF) in carbon steel (Model : MBC - M45, MBC - M25)
- MBS : Mounting bolts (7/16" UNF) in SS (Model : MBS - M45, MBS - M25)
- PRF : PTFE Ring For Flange Seal
- GRF : Grafoil Ring For Flange Seal

Example

To place an order simply refer to the codes in the table.

Valve Type : Body Material + Stem Type + Stem Packing + Size + Connections + Threads + Options
2VF + S + CT + P + 44 + FF + N = 2VF-S-CT-P-4F-FD-N-Options

NOTE:

- The weld prepared types are available with female plain end - suitable for socket weld.
- Anti-tamper bonnet - special design on request with locking arrangement if desired.